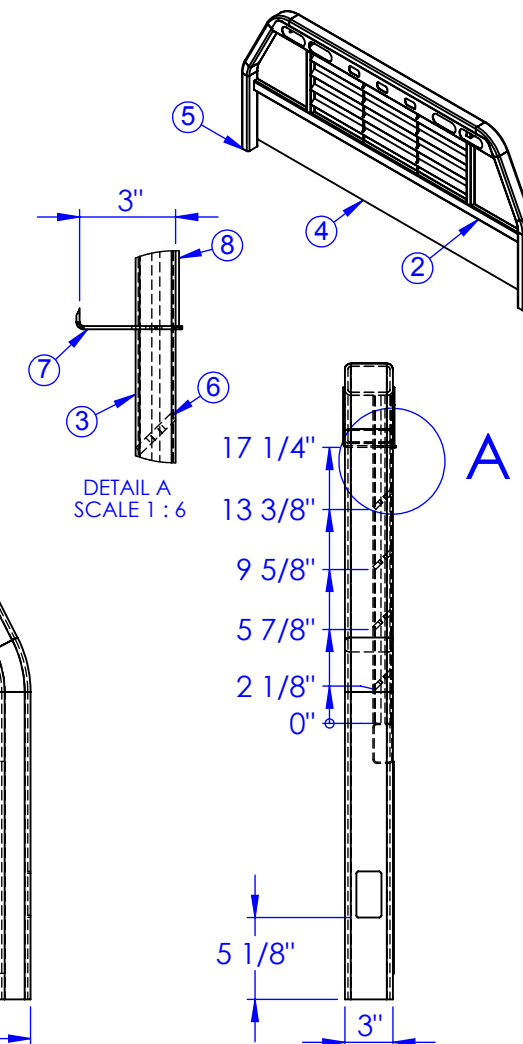
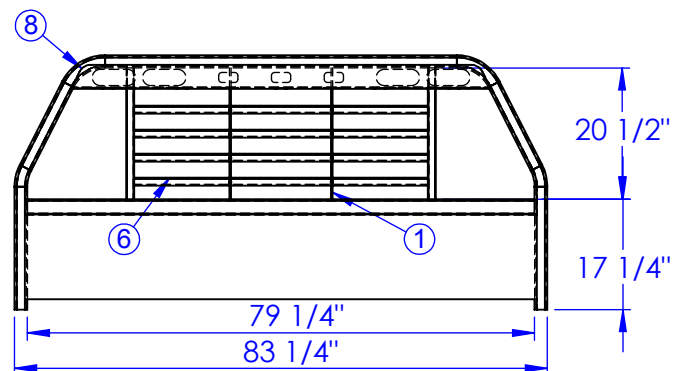
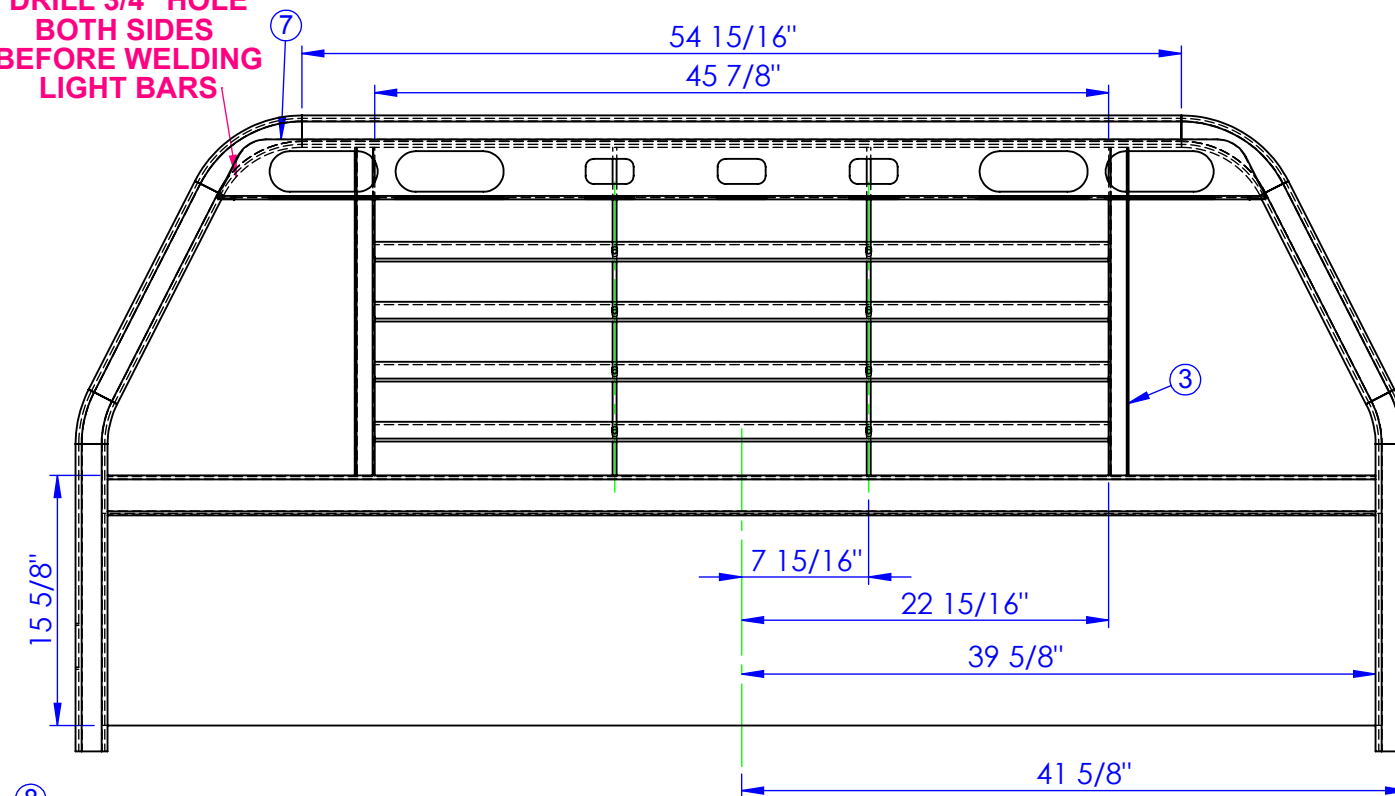


ITEM NO.	PART NUMBER	DESCRIPTION	MATERIAL	QTY.
1	ST-HR .25 ROUND L 20.5	LENGTH: 20-1/2"	ST-HR-1/4 ROUND	2
2	ST-RT 2.5x1.5x14ga L 79.25	LENGTH: 79-1/4"	ST-RT 2.5x1.5x14ga	1
3	ST 1.25 x 14ga L 20.5	LENGTH: 20-1/2"	ST 1-1/4 X 14ga	2
4	FP-FF-80X13.25	FRONT FILLER SHEET FOR APEX,PS.OSFB	14ga HRS	1
5	HR725	HEADACHE RACK, HYDRA BED,	3 X 2 X 11ga.	1
6	FP-HR-LOUVER	HEADACHE RACK LOUVER	1/4 HRS.	4
7	FP-APEX-HRLB1	LIGHT BAR, REAR, HEADACHE RACK	12ga HRS	1
8	FP-APEX-HRLB2	LIGHT BAR, FRONT, HEADACHE RACK	12ga HRS	1

REVISIONS			
REV.	DESCRIPTION	DATE	APPROVED
A	INITIAL RELEASE	12/5/2011	

DRILL 3/4" HOLE
BOTH SIDES
BEFORE WELDING
LIGHT BARS



NOTE:
1. NO SHIM ON SIDE LIGHT JIG

PROPRIETARY AND CONFIDENTIAL
THE INFORMATION CONTAINED IN THIS DRAWING IS THE SOLE PROPERTY OF TRIPLE C INC. ANY REPRODUCTION IN PART OR AS A WHOLE WITHOUT THE WRITTEN PERMISSION OF TRIPLE C INC. IS PROHIBITED.

DIMENSIONS ARE IN INCHES TOLERANCES: FRACTIONAL $\pm 1/16$ ANGULAR: MACH ± 1 BEND \pm TWO PLACE DECIMAL ± 0.10 THREE PLACE DECIMAL ± 0.005	
MATERIAL	--
DO NOT SCALE DRAWING	

NAME	DATE
DRAWN: HEATH	12/5/11
PART #	
ASM #	SUB-APEX-HEADACHE RACK
COMMENTS:	
HEADACHE RACK APEX	

P.O. BOX 248,
SABETHA, KS 66534

TRIPLE C
INC.

SIZE A	DWG. NO. 00-1300	REV. A
SCALE: 1:12	WEIGHT: HEATH	SHEET 1 OF 1